



**SUNNINGDALE**  
PARISH COUNCIL

# ANNUAL PARISH MEETING

---

Tuesday 28 March 2023

Sunningdale Village Hall



## Welcome to Sunningdale Parish Council

Working Together on Domestic Abuse Support



Sunningdale is a large village surrounded by green belt and lies within the borough of Windsor and Maidenhead. It is approximately 15 miles from Heathrow Airport and 30 miles from Central London.

The Local Government Act 1894 introduced elected district and parish councils. Sunningdale Parish Council held its first meeting on December 31st 1894 under the chairmanship of the Reverend Cree, the vicar of Holy Trinity Church at the time.



[www.sunningdale-pc.org.uk](http://www.sunningdale-pc.org.uk)

New website - launched last year

# Councillors who could not be here



Cllr Yvonne  
Jacklin



Cllr Michael  
Burn



Cllr Martin  
Penney

# Councillor Responsibilities



## Parish Council

A Parish Council is a corporate body whose actions are subject to much legislation over the years. It is a non-political Council dedicated to improving the quality of life for those living and working in the village. Sunningdale is a medium sized Parish of some 3,700 electors.

The Parish Council consists of ten Councillors. Councillors are part of the democratic framework of the country representing the interests of your community within a broad landscape of national governance.

[www.sunningdale-pc.org/councillor-responsibilities](http://www.sunningdale-pc.org/councillor-responsibilities)

## Work of the Parish Council

All councillor's responsibilities and which committees they sit on are on the website.



Telephone  
calls to the  
Parish Council

753



Visits to the  
Parish Office

367



**Totals**

**1120**

Enquires  
to the  
Parish  
Office

- The Cemeteries
- Parish Allotments
- Broomhall Park Tennis
- The Library
- The Recreation Ground
- The Café at the park
- Citizens Advice
- Community Venues for hire
- Planning information and how to get advice
- Events in and around the Parish
- Council Projects
- CIL and Council Grants
- The Village Hall
- Visitors to the Eye Clinics
- Council meetings, papers, councillors

Enquiries and visits include:



# 36 Parish Council and Committee Meetings

Back up to pre Covid levels :

12 Planning

9 Finance

6 Oversight and Strategy

Providing 9 hours of Public Adjournments to hear the questions / concerns of the residents

# Meetings



## Sunningdale Parish Council Meetings

All meeting dates and times are on the website  
as well as the previous year's minutes.  
All residents are invited to the meetings.



# Services around the village provided by the Parish Council.

Apart from managing the day-to-day work for the recreation ground, including the tennis courts and playgrounds, the Parish Council maintain different areas of the village:

The planter benches along Chobham Road shops, and other planters in the shopping area.

Bloom baskets during the year including the large tubs in the middle of the A30.

The bus shelters which are cleaned every month.

Benches around the village.

If there are any improvements or issues with these services, then we want to hear from you ...

The war memorial and the maintenance of the Holy Trinity Graveyard.

Kiln Lane Cemetery

The Allotment gardens on Church Road.

The dog bins around the village

18 pence  
per day ...

£1.23 per  
week

£5.36 per  
month

**ALL OF  
THIS IS  
DONE ON A  
PRECEPT  
OF £64.35  
PER YEAR  
(BAND D)**



# Income 2023-2024

The precept is supplemented by income generated from charging for the use of the facilities such as :

- Tennis Courts
- Recreation Ground
- Community Room
- Refreshment Chalet
- Allotments
- Cemetery
- Village Hall

In 2023-2024  
the income is  
budgeted to be  
£159,016 (31%  
increase over  
2022-2023)

Total income is  
budgeted at  
£387,978

# Income

# Community Infrastructure Levy (CIL)

CIL is a levy that is applied on major property development taking place locally.

CIL funds may only be spent on eligible projects.

CIL may not be used to subsidise the precept.



# Community Infrastructure Levy

- In 2023-2024 the CIL income has been assumed to be £500,000
- CIL expenditure is budgeted as £219,255
  - Cycling and walking infrastructure to support Active Travel
  - Creation of a Woodland Walk
  - Stakeholder Grants (see Website)
  - Continuation of the Citizens advice service in Sunningdale

# The Parish Council expenditure

The day-to-day cost of running the Council

Managing and maintaining it's properties and carpark

The popular facilities and services that are used to raise income

The Jubilee Clock

Flowerbeds, benches and planters in the Chobham Road and London Road

The Borough in Bloom cost

The Christmas Event

The War Memorial

The numerous benches and other assets around the village such as the Book Exchange

The Closed Cemetery at Holy Trinity Church

# NEXT MEETING OF THE FINANCE COMMITTEE IS 11<sup>TH</sup> APRIL

---

If you are interested in hearing about the Council finances,  
the meeting agenda and information will be on the  
website the week before the meeting.

The background of the slide features a close-up, slightly blurred photograph of a calendar page. Several black pushpins are pinned to the calendar, marking specific dates. A green semi-transparent overlay covers the entire image, and the text 'IN YEAR PROJECTS' is centered in white. A thin white horizontal line is positioned directly below the text.

# IN YEAR PROJECTS

# Multi Use Games Area - MUGA

MUGA is in the planning stage with RBWM

There has been interest from a number of different areas :

- five a side football
- team games
- training
- paddle tennis



# New Junior/Teen Play Area



The existing fitness and play equipment are failing safety inspections and will be removed/reused/recycled and disposed of with consideration given to the environment.



A new Junior/Teen Playground is planned to be moved adjacent to the Children's playground, to enable parents and carers to supervise children of different age groups more easily.



# New Pathway

Along with new MUGA and Playground, the Parish Council will be resurfacing the existing pathway by creating a 1.5m wide hard standing path leading from the Tennis Courts to the bridge over the brook.

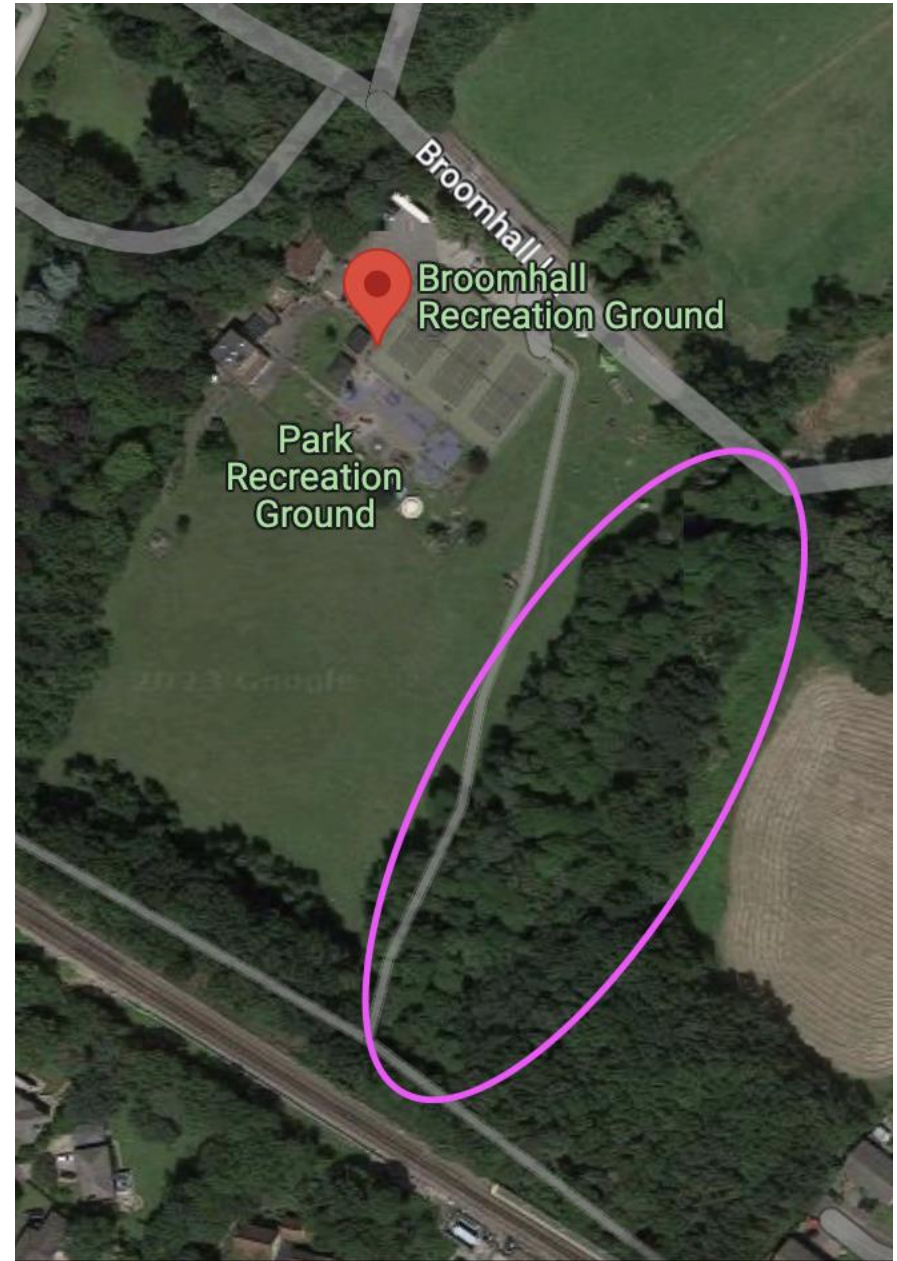
This will create better access for walkers to cross the field to gain access to the public right of way to Sunningdale Station.

# Woodland Walk

The Parish Council is working towards creating a Woodland Walk in the woodland adjacent to the Recreation Ground.

The project is in the initial stages and will create an additional natural space in Sunningdale.

The project design will be made available for resident views and comments prior to going ahead.



A person is riding a bicycle on a city street. The image is overlaid with a semi-transparent green filter. The text "SAFER STREETS ACTIVE CYCLING & WALKING & PUBLIC RIGHTS OF WAY" is written in white, bold, sans-serif capital letters across the upper half of the image. Below the title, a thin white horizontal line is present. Underneath the line, the text "Cllr David Biggs – coming up next" is written in a smaller, white, sans-serif font. The background shows a blurred city street with other bicycles and buildings.

# SAFER STREETS ACTIVE CYCLING & WALKING & PUBLIC RIGHTS OF WAY

---

Cllr David Biggs – coming up next

# Community Rooms/Café

This project is aimed at providing a permanent home for a coffee shop and library at the park, along with the expansion of the popular community space.

More news and information will be available on this project soon.





The Parish Council continues to supply and support residents with street cleaning equipment so that they can litter pick the village.

There is also a regular street cleaning event – see website for further details.



## Café at the Park

- Following a tender process, the recreation ground welcomed the new café



# Sunningdale Allotments William Pack Cup for 2022

1st Prize - William Hook

2nd Prize - Philip & Debbie Greenaway

3rd Prize - Glen Couper

Most Improved - Deborah Purkis

The winners were awarded their prizes at the Allotment Holders Tea which took place on Tuesday 25th October.



# Broomhall Tennis

Tennis at the park is thriving with new players enjoying the courts all the time.

The resurfacing of the tennis court as well as the renewed fencing and eco lighting.

An LTA Accredited Venue with a Welfare Officer.

Tennis Ladders.

Coaching for local children and adults

Continued free use by Holy Trinity School under Schools Sports Partnership.



# The Planning Committee

Through the monthly meetings of the committee :

Planning applications reviewed - 189

Letters objecting - 31

Representations at control panel - 1

# Key Planning Observations

High number of applications for blocks of flats

Large number of new dwellings to be constructed:-

- Sunningdale Park – now 293 Dwellings
- Stone Court – 40 retirement living apartments
- Sylvanus House – 7 apartments
- Hill House – 9 apartments
- The Coppers – 9 apartment
- Equaling 358 just with these five sites

More still are appearing in planning

- Old and New Boundary House – 28 apartments
- Broomhall Car Park site – 30 residential units
- White Lodge - 5 houses and the redevelopment of the original house

# NEXT MEETING OF THE PLANNING COMMITTEE IS 11<sup>TH</sup> APRIL

[More details on the website](#)





# Outreach with Citizens Advice East Berks

83 face to face appointments

41 unique visitors

385 areas of concern that were assisted

207 separate contact activities undertaken by CAEB

47 actions classed as 'cases' to be managed

Outcome - £144,279 income through benefits and credits

- £5,719 other savings / debt management

- 18 separate categories of support

-

# LOOKING FORWARD

The need for more infrastructure following all the various permitted developments in Sunningdale.

A MUGA and new play equipment in the recreation ground.

The tennis courts being resurfaced and new fencing.

Road safety on A30 – the busiest road in the whole Borough.

# What's Important to You?

---

Protection of the Green belt?

---

Cleaner streets?

---

Sunningdale as a leafy residential village?

---

More Infrastructure?

---

Safer street for walking and cycling?

---

Please let us know by leaving your thoughts on the papers here tonight

# LOCAL ELECTIONS 2023

Elections for both Borough and Parish are on 4 May 2023.

See RBWM website for all details on how to become either a Borough or Parish Councilor.

# CLLR DAVID BIGGS – SAFER STREETS

# Cycling & Walking Vision



# Step-change in national and local focus on cycling and walking



UK Govt made new and significant commitment to boost cycling and walking

Supported by major funding initiatives

## Benefits

- affordable
- significant health benefits
- improve well-being
- mitigates congestion
- improves air quality
- reduces carbon emissions

- RBWM note possible impacts of doing nothing:
  - increase in traffic collisions/road danger
  - decline in accessibility
  - poorer economic performance
- Neighbourhood Plan identified opportunities for improved cycling provision

# Improving infrastructure & encouraging leisure & active travel

- Local topography and narrow roads prevented improved cycling infrastructure
- **Joint Working Party** formed in 2021 between the two Parishes
  - to work together
  - to improve infrastructure
  - to encourage leisure and active travel

*“a shared vision, a shared set of priorities and to work as a single voice”*

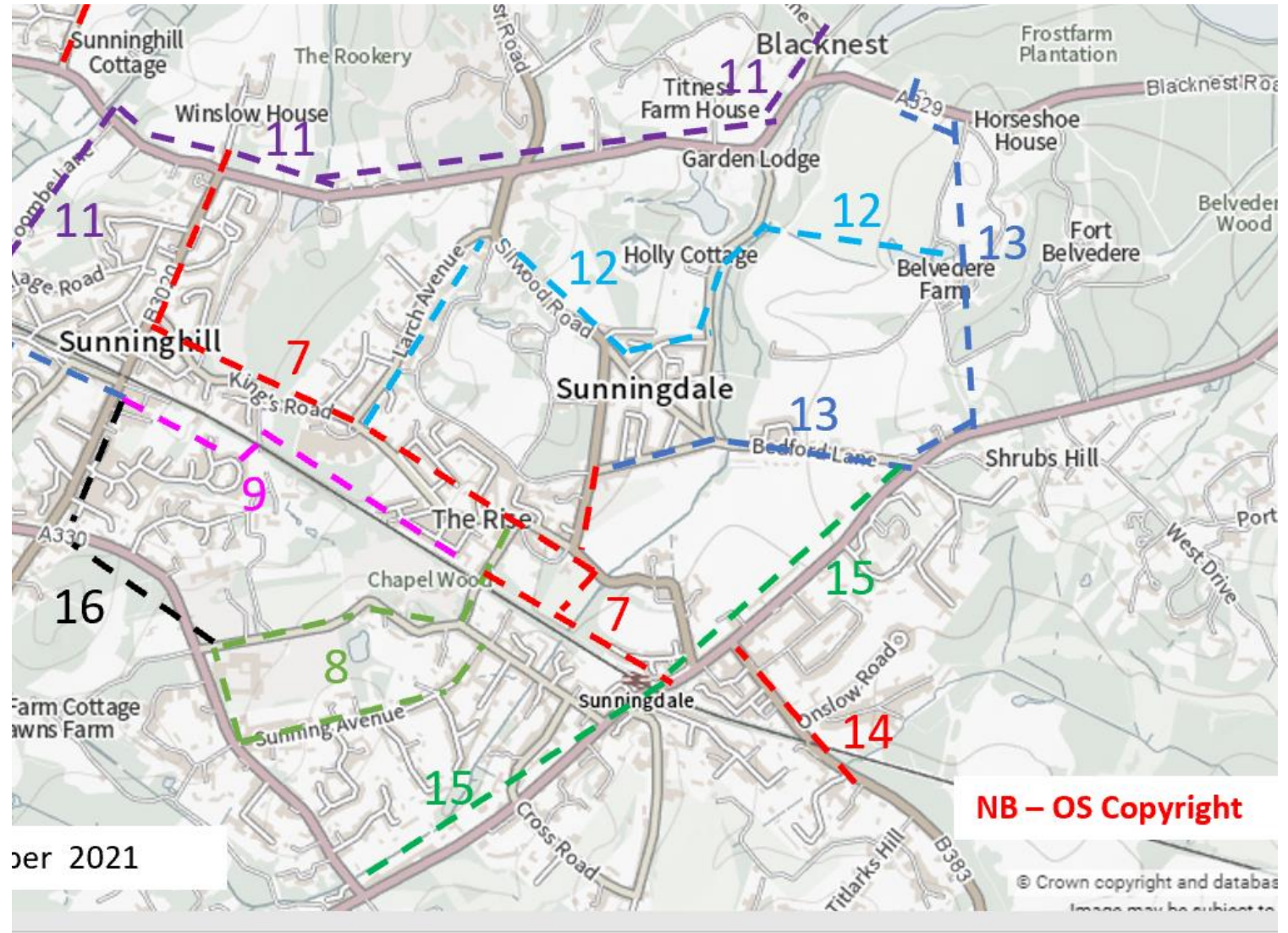
- Reviewed all existing ideas and created a Vision – A Cycling and Walking Network
- Delivery will inevitably require step by step approach to create the Network
- Shared Vision with RBWM Officers and our local Borough Councillors





# Our Vision – A Network for Leisure & Active Travel

- Connecting homes, schools, services, shops & businesses
- To boost active travel
- Improved access to leisure cycling and walking including access to Windsor Great Park & Chobham Common
- A working Group priority a North West to South East route, from North Ascot to Sunningdale



# FREDERICK HILL – BERKELEY HOMES





Sunningdale Park

ROYAL BERKSHIRE







# Sunningdale Park

ROYAL BERKSHIRE

## Masterplan



Proposed site access points

**Berkeley**  
Designed for life



# Sunningdale Park

ROYAL BERKSHIRE

## SANG Layout



----- Proposed SANG access routes



# Sunningdale Park

ROYAL BERKSHIRE

Sunningdale Park is a former private country estate, centred around Northcote House, and parts are now open to the public for everyone to enjoy. Throughout the year, you can discover the parkland's rich biodiversity as the sights and sounds of nature are here in abundance with deer and squirrels in the undergrowth, ducks on the lake, red kites overhead and a myriad of animals in the woodland.

## Wildlife at Sunningdale Park

### CAN YOU SPOT?

#### Badgers

Badgers use the open grassland and woodland habitats for night-time foraging. Look out for signs of badger holes.



#### Bats

Bats can be seen foraging at dusk, especially along woodland edges around Sunningdale Park.



#### Birds

Look out for Owls, Red Kite, Buzzard, Song Thrush and Bullfinch. Please don't disturb any ground nesting birds.



#### Deer

Both Roe Deer and Muntjac Deer are present and can frequently be seen across the parkland habitats.



#### Rabbits

They can be seen all year and more often at night. Watch your step as there are lots of rabbit burrows around!



#### Reptiles

Grass Snake and Slow-worm have been recorded from areas of woodland edge and rough grassland habitat. Both species are harmless.



## The Parkland

### EXPERIENCE NATURE

Sunningdale Park has been a rare and captivating haven for nature for many centuries.

It is now open for you to enjoy where you can discover the parkland's rich biodiversity as the sights and sounds of nature are here in abundance.

### DID YOU KNOW?

One of the oldest trees is a mature Sweet Chestnut tree located on the edge of the Northcote Gardens.

This tree is about 500 years old dating back to c.1520 (Henry VIII era).

### WATCH OUT!

If you do venture off the paths, please watch out for rabbit & badger holes and low branches.

## Chestnut Hill



### CAN YOU SPOT?

#### Veteran tree

Admire a very large, mature Spanish Chestnut tree (*Castanea sativa*) within the ornamental gardens that form part of Northcote Gardens. This tree is about 500 years old, dating back to c.1520 (Henry VIII era). It is one of almost 10,000 trees that populate the estate, amongst a number of Sequoia trees (Giant Redwoods), brought to UK from America by William Lobb in 1853, planted between 1860-90.

## Hawker's Pond



### DID YOU KNOW?

The Hawkers Pond is a new addition to Sunningdale Park improving the biodiversity of the parkland as well as providing sustainable drainage for the surrounding residential areas. It is wildlife friendly with gently shelving margins planted with a variety of native aquatic and marginal plants that can flourish in both wet and dry conditions depending on differing water levels, where species like the Southern Hawker Dragonfly flourishes.

## The Woodland



### DID YOU KNOW?

Much of the adjoining woodland is relatively young and part of it was used as allotments during WW2. It supports a wide variety of plants and wildflowers like Spanish Bluebell, English Bluebell and Honeysuckle.



#### MAP KEY

- 1 NORTHCOTE HOUSE
- 2 THE VETERAN TREE
- 3 HAWKERS POND
- 4 DARTY RESIDENCE
- 5 WALKED GARDEN
- 6 GARDENERS COTTAGES
- 7 SOUTH LODGE
- 8 CAR PARK
- 9 CAR ACCESS
- 10 PEDESTRIAN ACCESS ONLY
- 11 KEY VENUEPOINTS
- 12 SUGGESTED ROUTE (GLAND)
- 13 FORELAND EXTENT
- 14 RESERVE
- 15 BUSH

c.1786

The Stourts

The first house is reputedly built by James Wyatt for James William Stewart, a gentleman farmer and the grandson of Admiral James Stewart (1678-1757).

1859

The Crosley & Maclean are the Stourts to add to Sir Charles Crosley, and again in 1852 to Sir James Thompson Maclean, a self-made Scottish millionaire, who was friendly with Queen Victoria. In 1855, upon Sir Charles's request, the Estate was used as the starting point of the Royal procession during Ascot week.

1929

The Curllife-Owens The Estate is acquired by Sir Hugo Curllife-Owens, President of the British-American Tobacco Company and Chairman of Curllife-Owens Aircraft Ltd. In 1931, the neo-Georgian Northcote House is built and used mainly as a place to entertain Ascot house parties, which continued until the war. There are also reports of gardens being first opened to the public under the National Gardens Scheme.

1970

By 1967, the threat of all-out war was considered to have diminished to a negligible risk and the CDSIC was closed. 1970 The Civil Service College was opened, and over the years, it evolved to become the National School of Government, which provided training and development courses for UK civil servants and private individuals until its closure in March 2012.

2012

The estate is used as a hotel and conference facility.

2022

Berkley opens the parkland to the public for everyone to enjoy.

1842

James William Stewart dies in Brussels and the Sunningdale estate is inherited by his brother, the Reverend Charles Augustus Stewart (d.1896), the rector of Gokham, Surrey. Rev. Stewart builds a new house higher on the hill, on the site of the present building.

1890

The Jockeys Maclean sold the Estate in August 1890, days before his death, to Major William James Jockey (1838-1912), coal baron and High Sheriff of Durham. The Jockeys remodelled the gardens with the help of James Pulteney. The Jockeys are also responsible for many of the red brick and stone style buildings around the site including the North and South Lodges.

1950

The Government Years After Sir Hugo's death in 1947 Sunningdale Park was sold to the Crown. The then Home Secretary, James Chuter Ede, opens the Civil Defence Staff College (CDSIC) at Sunningdale Park. In 1952 the Civil Defence Tactical School opens, specialising in the problems of Atomic war.

2003

Sunningdale Park is designated a Grade II Registered Park & Garden (list entry no. 1007965).

2020

Berkley and Audley acquired Sunningdale Park to restore the historic parkland and the many historic buildings nestled within the estate.







# CLLR DAVID BIGGS – SAFER STREETS

# Working Group approach to delivering The Vision

- Noted the challenges in separating pedestrians & cyclists in our area
- Very narrow roads with limited pavement space – if at all
- Priority is to improving safety on the existing mixed usage roads



# A Road to Safer Streets



# Safer Streets Community Consultation October '22

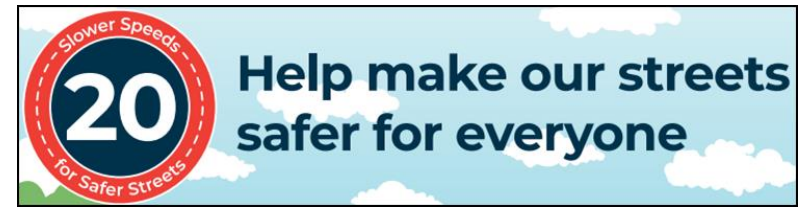
- What is the simplest, easiest and most cost-effective way of improving safety for all road users?



- Do you support 20 mph on selected roads where full consideration of the needs of vulnerable road users supports this lower limit?
- What other ideas to make our streets safer?



# Consultation Results



- 272 respondents
- 81% in support of 20mph on selected roads
- 657 specific road nominations
- 139 additional comments incl. many suggestions for safety improvements

81%



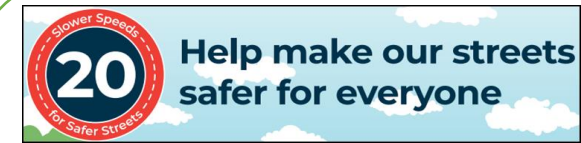
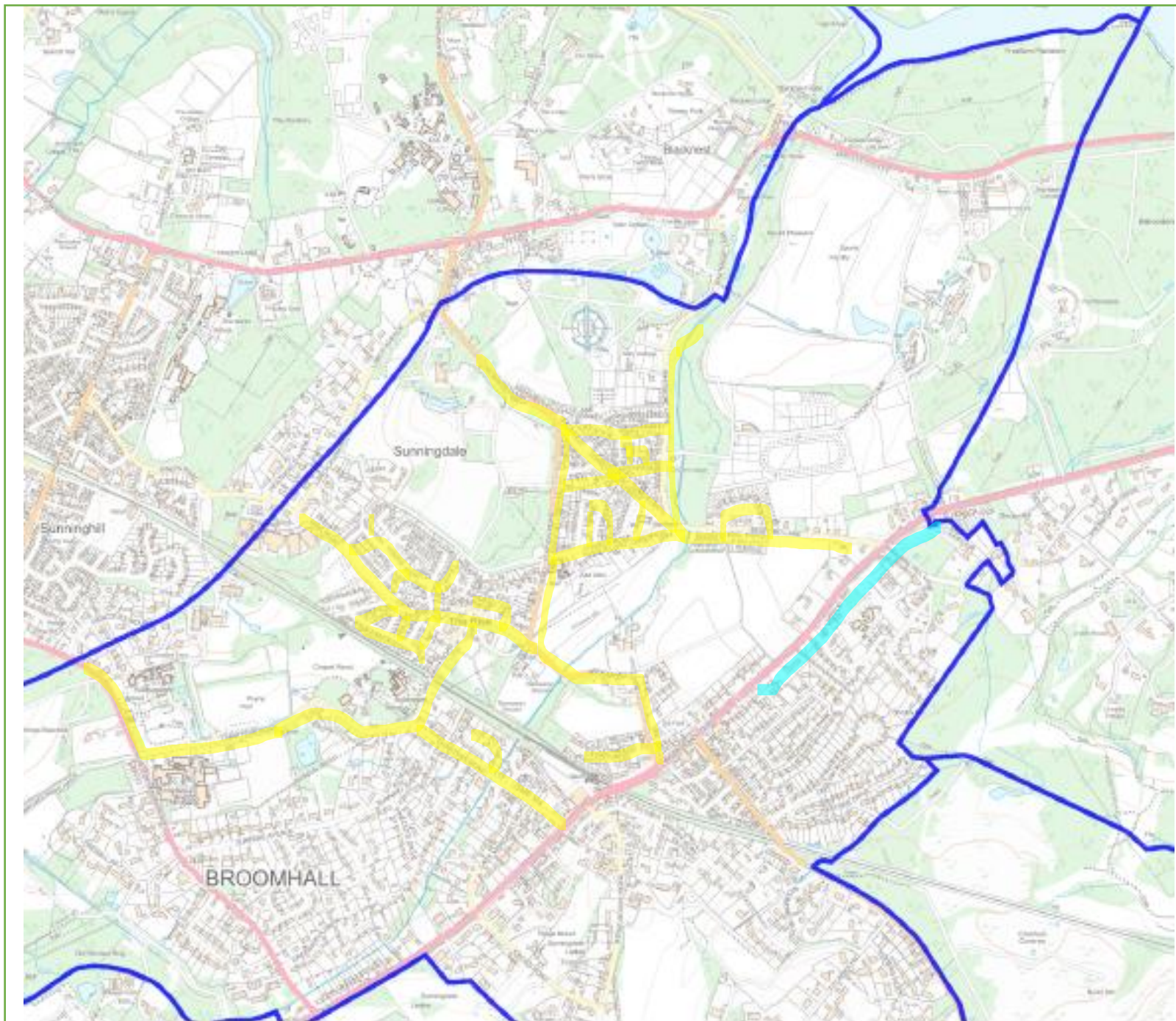


# Proposed changes – speed limits



- 20mph zone centred around Old Village
- Roads which received the most nominations (& their side roads)
- Narrow pavement or no pavement
- No alternative way of separating vulnerable road users
- Schools, churches, Village Hall, Recreation Ground, Surgery / Medical Centre
- Coherent cluster or zone to minimise speed limit changes for compliance
- 40mph to 30mph on A30 to east of village





## Sunningdale Parish Proposed Safer Streets Changes 2023

Key:

New 20 mph

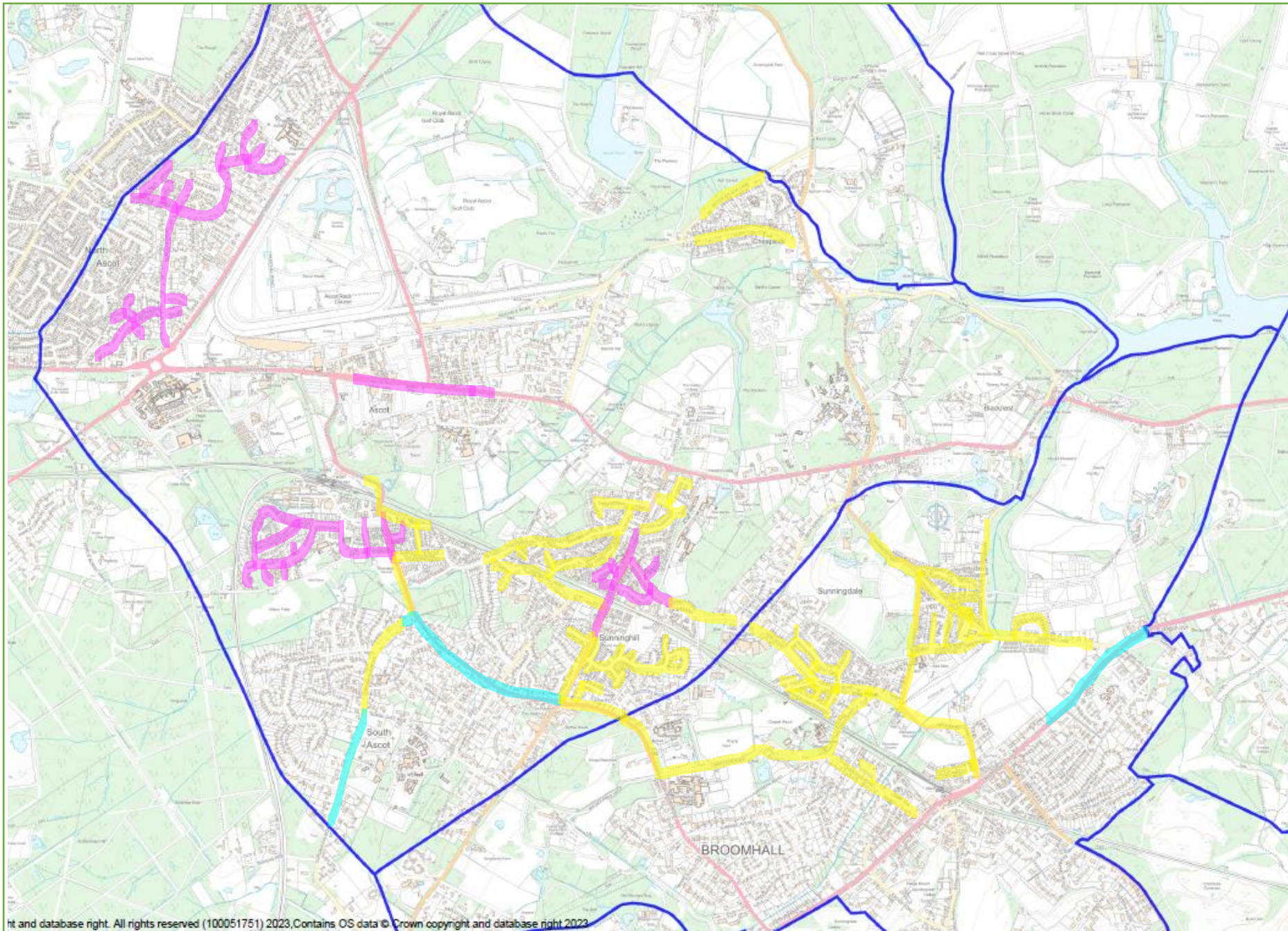
From 40mph to 30mph

Blue lines mark Parish boundaries

### Proposed 20mph Roads

Bedford Lane	Cedar Drive
Coworth Close	Rise Road
Whitmore Lane	Oakdene
Coworth Road	Park Drive
Dale Lodge Road	Park Crescent
Dale Close	Highfields
Leacroft	Lynwood Crescent
Kiln Lane	Beech Hill Road
High St.	Galton Road
Sandy Lane	Dry Arch Road
Station Road	Charters Road
Parkside Road	Woodby Drive
Church Road	Devenish Road
Broomhall Lane	





## Sunningdale Parish & Sunninghill & Ascot Parish

### Proposed Safer Streets Changes 2023

#### Key

Existing 20 mph

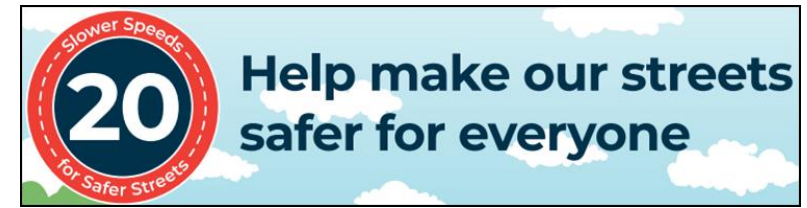
New 20 mph

From 40mph to 30mph

Blue lines mark Parish  
boundaries



# Eight other proposed changes



1. “Gateway” signs as enter 20mph and 20 mph markers within zone
2. Improved summer maintenance of existing footpaths
3. Renovation of Bridleway / PROW from A30 to Coworth Park
4. Better maintenance of speed limit signs on A30
5. Improve safety of parking in vicinity of Pelican Crossing on A30 (near Dominos)
6. Actions to reduce vehicles crossing wrong side of Zebra Crossing on A30 (Waitrose)
7. Pedestrian crossing on Rise Road close to new Medical Centre
8. Traffic light controlled access through Dry Arch Road



# 20mph is becoming the norm

- Many of the UK's larger cities have adopted 20mph for their residential streets – with the number of roads growing year on year
- In 2010 under 1m people in UK lived in places with 20 mph. By 2023 26m live in [places](#) where 20mph is or will be the urban/village norm.
- Wales is about to implement a [20mph national default for residential roads](#).
- The General Assembly of the United Nations endorses [20mph or 30km/h speed limits](#) where people mix with motor vehicles, unless strong evidence exists that higher speeds are safe.





## How the national 30mph limit fails to protect

In the last 10 years on 30mph roads in England, Scotland and Wales



973,570 people injured on 30mph roads

The 30mph limit does not provide a safe or fear-free urban environment



5,572 killed on 30mph roads  
54% were pedestrians or cyclists

Increasing demand on the NHS

The national 30mph limit is failing to meet the needs of a 21st century communities



58% of all road casualties were on 30mph streets

## Casualty reductions in practice



### UK authorities

- Calderdale - 30-40% fewer casualties
- Bath - 23% fewer casualties
- Cheshire West and Chester - 43% fewer casualties
- Edinburgh - 33% fewer casualties



### EU locations

- Brussels - 19% reduction in fatalities
- Bilbao - 24% fewer crashes
- Helsinki - Zero fatalities
- Oslo - Zero pedestrian or cyclist fatalities
- Spain - 20% reduction in fatalities

Reducing demand on the NHS

#20mphcon



## 20mph - already a norm across the UK



- Highway Authorities setting 20mph for most roads
  - Majority of 40 largest urban authorities
  - Shire counties like Lancashire, Oxfordshire and Cornwall and many more
  - All Inner London Boroughs, many outer
  - Capital cities of Edinburgh and Cardiff
  - Transport for London set many arterial roads at 20mph
- Wales has set a national urban 20mph from Sept 23
- Scotland plans 20mph as urban norm by 2024
- Surrey is setting 20mph for some country lanes
- Now 26 m people (38% of UK pop) have or are planned to get 20mph - more shire counties considering

#20mphcon

## To summarise on wide-area 20mph

We know it reduces speeds - 5mph on faster roads

We know it reduces casualties - 20-40%

We know it reduces emissions directly and indirectly

We know it is popular with 70-80% public support

We know it is affordable as signs plus engagement

**How can it be delivered better and wider?**

#20mphcon



# Safer Streets Next Steps



- Proposals to be shared on parish websites
- Seeking community comments on these proposals
- Liaison with SAPC to ensure continuity as travel from parish to parish
- Finalisation and submission to RBWM (Highways Authority)





# Residents Comments & Questions



**THANK YOU FOR  
COMING**

Council Meeting  
18 April 2023  
at 7:30pm