



SUNNINGDALE
PARISH COUNCIL

ANNUAL PARISH MEETING

Sunningdale Parish Council

2022

Thank you
to the
Councillors
who retired

Mary Sayer

Anne Brindle

Julia Chester

The Parish Team

Ruth - The Clerk

Nikki - The Deputy Clerk

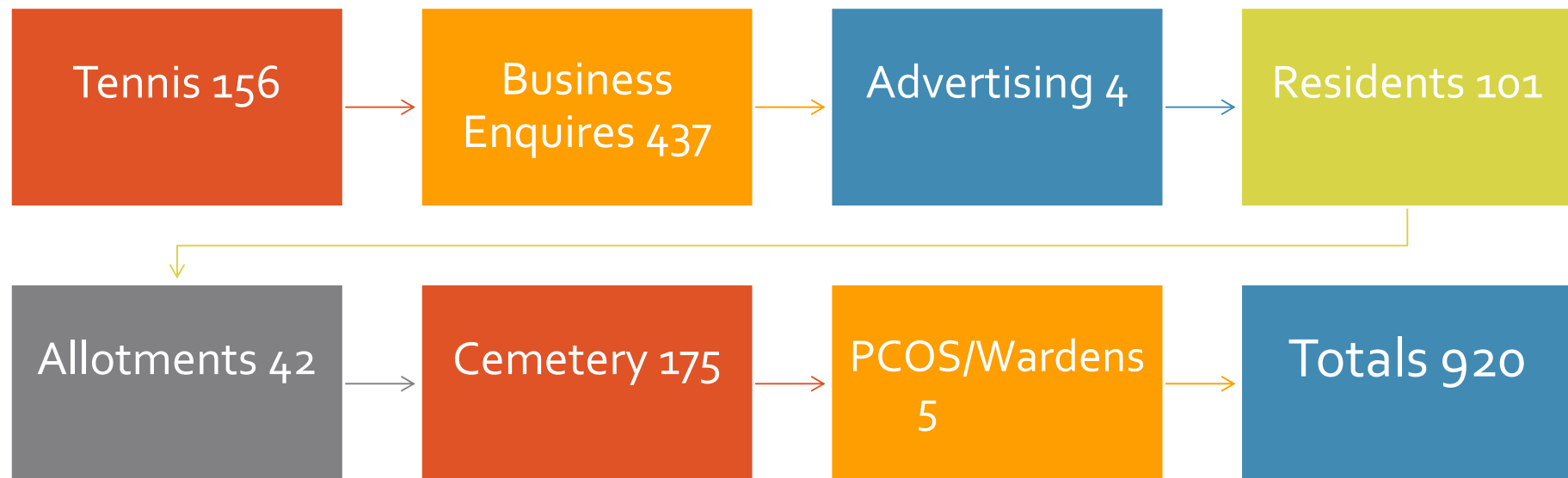
Julia -The Assistant to the Clerk

John – Recreation Grounds Manager

Carol – Marketing the Village Hall

Gemma – Village Hall Operations

An Overview of Enquires to Parish Office



35 Parish Council and Committee Meetings

9 Council meetings – less than usual due to COVID

12 Planning

8 Finance

6 Oversight and Strategy

Providing 8¾ hours of Public Adjournments to hear the questions / concerns of the residents

Services around the village provided by the Parish Council.



The recreation ground, including the tennis courts and playgrounds



The planter benches along Chobham Road shops, and other planters in the shopping area.



Bloom baskets during the year including the large tubs in the middle of the A30.



The bus shelters which are now cleaned every month.



Benches around the village.

If there are any improvements or issues with these services, then we want to hear from you ...

The war memorial and the maintenance of the Holy Trinity Graveyard.

Kiln Lane Cemetery.

The Allotment gardens on Church Road.

The dog bins around the village, and we are always happy to look at adding more if there are locations with issues.

**ALL THIS WAS DONE ON
A PRECEPT OF £55.51
PER YEAR (BAND D)**

15p per
day ...

£1.07 per
week

£4.63 per
month

The highlights of the past year

Taking on the maintenance of Holy Trinity Church closed graveyard.

Taking on the library provision for the village to prevent closure of a service for our residents.

Consultation with residents for the future development of the recreation ground.

More high lights of 2021 - 22

Working

Working with the police for a new ANPR camera in the village.

Funding

Funding Charters School to provide a new outdoor area for the Sixth form in partnership with Sunninghill and Ascot Parish Council.

Helping

Helping with the provision of two new defibrillators in the village.



THE LIGHTING OF THE FIR TREE IN THE RECREATION GROUND

Along with the 27 lights that run along the A30 and Chobham Road, in 2021 the council lit the large fir tree at the recreation ground.

Choir from Holy Trinity year 6 and parents were able to attend the outdoor event on the 10th December 2021

At the request of a resident, the Parish Council provided street cleaning equipment so that they could litter pick the village. This has now become a regular village event.

During the pandemic – the parish team cleaned the streets and kept on top of the verges and pavements to facilitate the residents to enjoy their daily walk.



Sunningdale Allotments – William Pack Cup for 2021

1st Prize - Elizabeth Roberts

2nd Prize - Glen Couper

3rd Prize - Dan Valentine-Penney

Highly Commended - Debbie Greenaway

Best Newcomer - William Hook





PLANTER BENCHES FOR CHOBHAM ROAD

Two New Defibrillators

Working with residents to put defibrillators where they are needed in the village :

- By Lewis 'The Butcher
- By the Nags Head – public house

Defibrillators can make a big difference to the outcome to a heart attack.



The Planning Committee

- reviewed 250 planning applications
- wrote 49 Objection letters

Planning
2021-22

Planning 2021-22

- Key Planning Regulation Changes:
- The Town and Country Planning (Permitted Development and Miscellaneous Amendments) (England) (Coronavirus) Regulations 2020 Part 20
 - These amendments introduce new permitted developments rights (“PDRs”) which allow for the development of new residential accommodation without the need for express planning permission. The new PDRs permit the construction of additional storeys on existing residential or commercial premises and the demolition and re-development of freestanding blocks of flats and certain commercial buildings for residential purposes.
 - Impact of this is demonstrated by the approval of an additional storey on Beverley Court, under this regulation
- RBWM Local Borough plan, approved 8 February 2022

Key Planning Observations

High number of applications for blocks of flats

Large number of new dwellings to be constructed:-

- Sunningdale Park – now 293 Dwellings
- Stone Court – 40 retirement living apartments
- Sylvanus House – 7 apartments
- Hill House – 9 apartments
- The Coppers – 9 apartments
- = 358 just with these five sites

More still are appearing in planning

- Old and New Boundary House – 28 apartments
- Broomhall Car Park site – 30 residential units

Community Medical Hub

Planning permission
approved.

Combines Magnolia
House and Kings
Corner surgeries

Building positioned in
North West of site
close to Ben Lynwood

Green Belt- preserves
gap between villages

Open 8am to 6.30pm
Monday to Friday,
closed Saturday/
Sunday

24 consultation rooms
for Primary Care and
12 rooms for
Community Services

Funded / constructed
by NHS (Frimley Park
Clinical
Commissioning Group)



**East
Berkshire**

NEW Confidential Support Service for Sunningdale

Citizens Advice East Berkshire in partnership with Sunningdale Parish Council will be at the Parish Office at the Recreation Ground **every Friday 9am to 3pm** with a confidential outreach service.

**Whoever you are, whatever the issue, this confidential service
is being made available to help solve your problems.**

Through **free, impartial, confidential and independent** advice and information, the service will ensure everyone is fully advised on their rights and responsibilities should they need the support.



THE BIG JUBILEE LUNCH

LOOKING FORWARD

The need for more infrastructure following the permitted development at Sunningdale Park and other locations around the village.

Road safety on A30 – the busiest road in the whole Borough.

What's Important to You?

Cleaner streets?

Protection of the
Green belt?

Sunningdale as a
leafy residential
village?

More shops?

More
Infrastructure?

Please let us know
by leaving your
thoughts on the
papers here tonight

LOCAL ELECTIONS 2023

Elections for both Borough and Parish are on 4nd May 2023.

See RBWM website for all details on how to become either a Borough or Parish Councilor.

The background is a collage of financial-related items with a green tint. It includes a calculator on the left, a pie chart in the center, a line graph on the left, a bar chart on the right, and a pen at the bottom. A compass is also visible on the right side. The text is overlaid on this background.

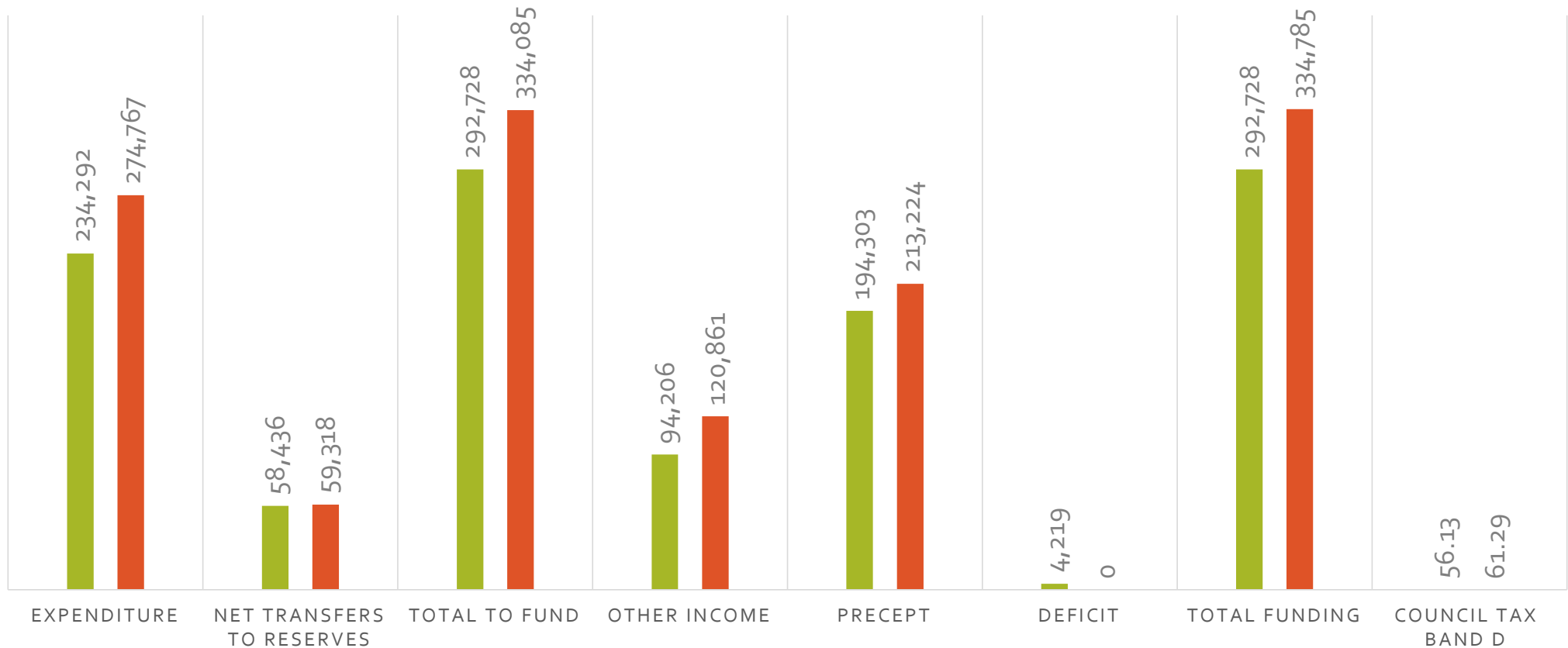
COUNCIL FINANCES

The Budget for 2022 2023

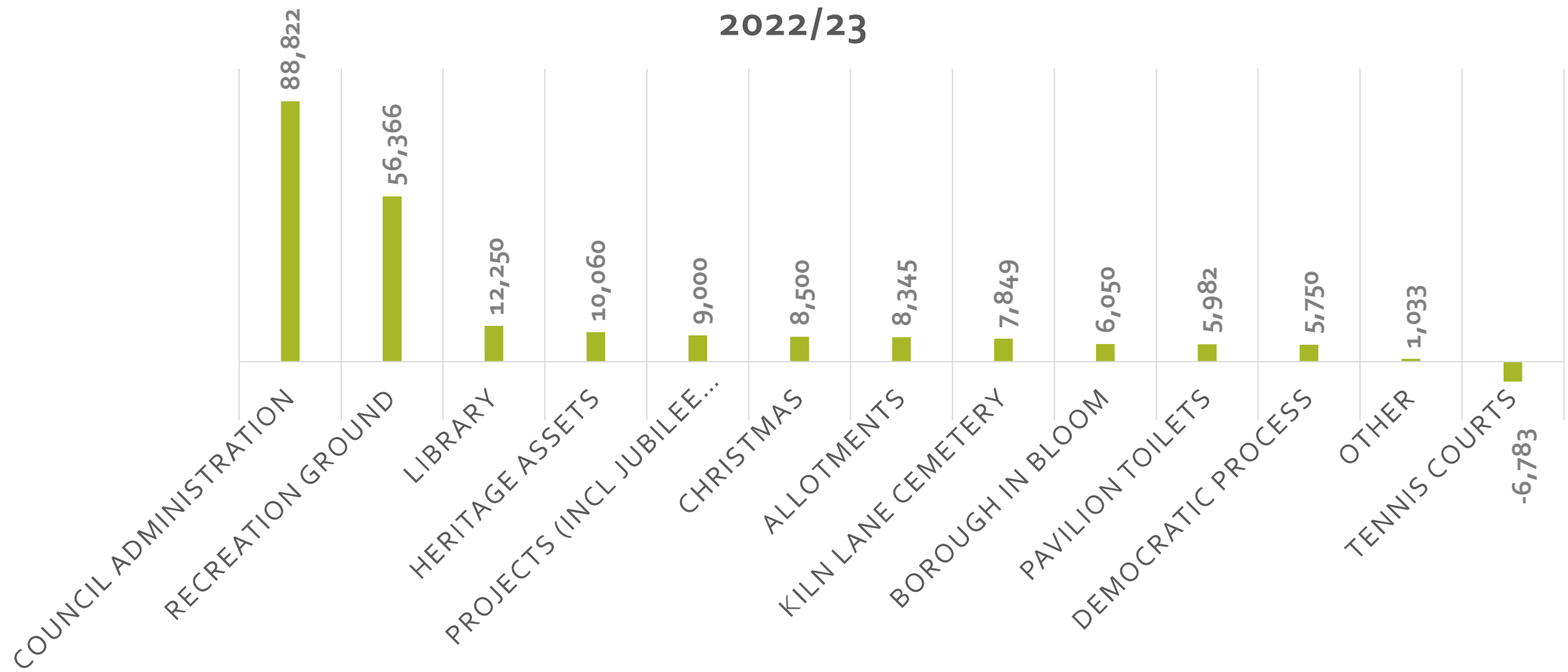
125,058	154,568	95,054	124,500
125,487	56,845	97,511	125,000
124,000	110,000	99,011	154,000
1450	150,000	99,216	95,000
	35,000	101,090	154,200
		101,684	110,000
		101,962	89,000
			50,000
			2,700

Budget – excluding CIL Community Infrastructure Levy

■ 2021/22 ■ 2022/23



Precept Breakdown



Budget for Community Infrastructure

£	2022/23	2021/22
Multi-Use Games Area	303,900	0
Other Projects	16,900	0
CIL Projects Officer	25,756	
Total Expenditure	346,556	0
Net Transfer to Reserve	153,444	0
Total to Fund	500,000	0
Funded by estimated CIL	500,000	0

Reserves - Unrestricted

£	31 Mar 23 Budget	31 Mar 22 Actual	+ / (-)
General (Operational)	122,642	122,642	0
EMR: Asset Renewals	77,056	64,854	12,202
EMR: Capital Projects	49,482	37,482	12,000
EMR: Major Works	140,567	102,033	38,534
EMR: Other	14,678	18,096	(3,418)
Total Ear-Marked (EMR)	281,782	222,464	59,318
Total Unrestricted	404,424	345,106	59,318

Total Reserves

£	31 Mar 23 Budget	31 Mar 22 Actual	+ / (-)
Unrestricted	404,424	345,106	59,318
Restricted			
Section 106	18,772	18,772	0
Community Infrastructure Levy	856,721	703,277	153,444
Total	1,279,917	1,067,155	212,762

A PRECEPT FOR 2022 2023 OF £61.29 PER YEAR (BAND D)

17p per
day ...

£1.78 per
week

£5.11 per
month



CYCLING AND WALKING



Step-change in national and local focus

- UK Govt made new and significant commitment to boost cycling and walking
- Supported by major funding initiatives & independent initiatives
- Benefits
 - affordable
 - significant health benefits
 - improve well-being
 - mitigates congestion
 - improves air quality
 - reduces carbon emissions
- RBWM note possible impacts of doing nothing:
 - increase in traffic collisions/road danger
 - decline in accessibility
 - poorer economic performance
- Neighbourhood Plan identified opportunities for improved cycling provision



Improving infrastructure, encouraging leisure and active travel

- Local topography and narrow roads prevented improved cycling infrastructure

- **Joint Working Party** formed in 2021 between the two Parishes

- work together to improve infrastructure and encourage leisure and active travel
"a shared vision, a shared set of priorities and to work as a single voice"

- **Reviewed all existing ideas and created a Vision – A Cycling and Walking Network**

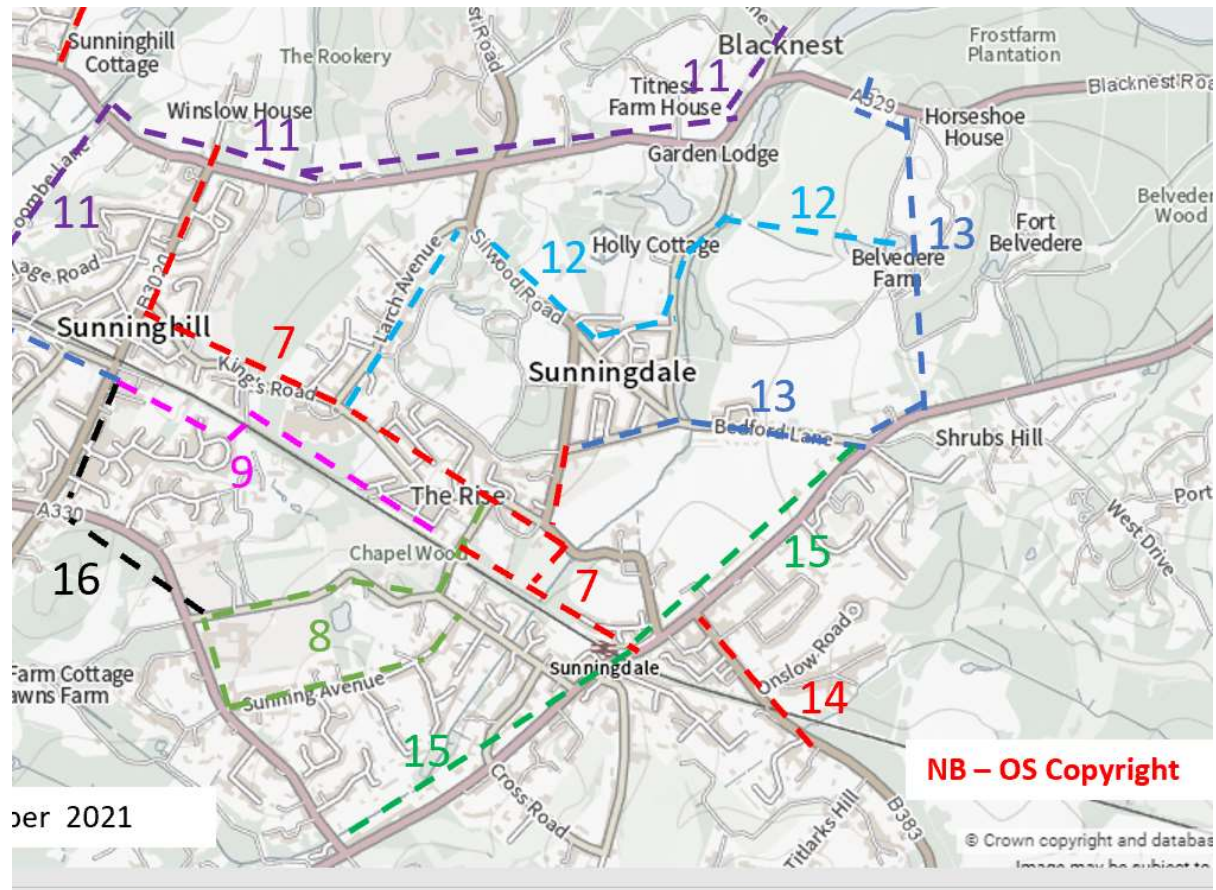
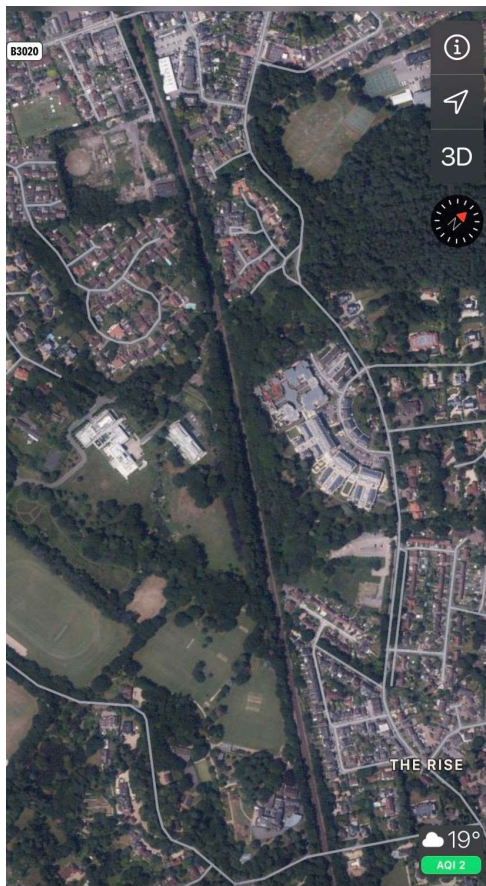
- connecting homes, schools, services, shops & businesses to boost active travel
- improved access to leisure cycling and walking incl. WGP and Chobham Common
- agreed a priority North West to South East route

- **delivery will inevitably require step by step approach to create the Network**

 **SUNNINGDALE**
PARISH COUNCIL

 **SUNNINGHILL & ASCOT**
PARISH COUNCIL

Our Vision - A Network for Leisure & Active Travel





Community Consultation - 20 mph speed limits

- Preference is for separation between vehicles & vulnerable road users
 - Victorian highway infrastructure is challenging
- 20mph speed limits inexpensive & proven way to encourage more cycling & walking
 - Fewer accidents & lower risk of fatal or serious injuries
 - Safer for walking or cycling to school
 - Improved health
 - Reduced carbon emissions and pollution
 - Better quality of life
 - Fuel savings
 - Asking community if you support the principle & suggestions for roads
 - If supported, then approach Highways Authority who set the limits





FACILITIES

Ongoing activities

Very busy year for the Council team on local projects:

- Tennis Courts
- Playground
- Recreation ground
- Snack Shack
- Community Room
- Preparation for new installations at Broomhall Park



Tennis

- 2021/22 is the highest revenue ever >£30k which will allow the council to bring forward the replacement and upgrade.
- Highest number of residents adopting the use of 'membership' now stands at 350+
- New ladder tennis leagues supported by busiest 'members evenings'
- Interclub tournaments with West End Tennis – expanding to others in the future



Playground

- 2 year wait for the new rocking horse – which has been named "Jumping Jubilee" on Facebook by the residents



Recreation Ground

- Be Military Fit (**BMF**) now at the park 3 times per week – even through the winter on the very wet ground – so looking forward to the Multi Use Games Area (MUGA) which they will use in the winter months



Snack Shack

- This has been upgraded and opens Thursday 26th May.
- Fieldhouse Coffee (Windlesham) are managing the new operation and cooperating with us in designing a new larger more appropriate facility for the coming years.
- Tremendous effort from the Deputy Clerk to achieve this.



Community Room

- This has generated over £11,000 last year (@£12.50 per hour) but continues to be made available FOC for the library and community groups in addition to all council meetings.
- A tremendous balance of revenue and community support
- This facility has also allowed the Eye Clinic to bring their service local

Proposed New Equipment and Areas

Multi Use Games Area (MUGA)

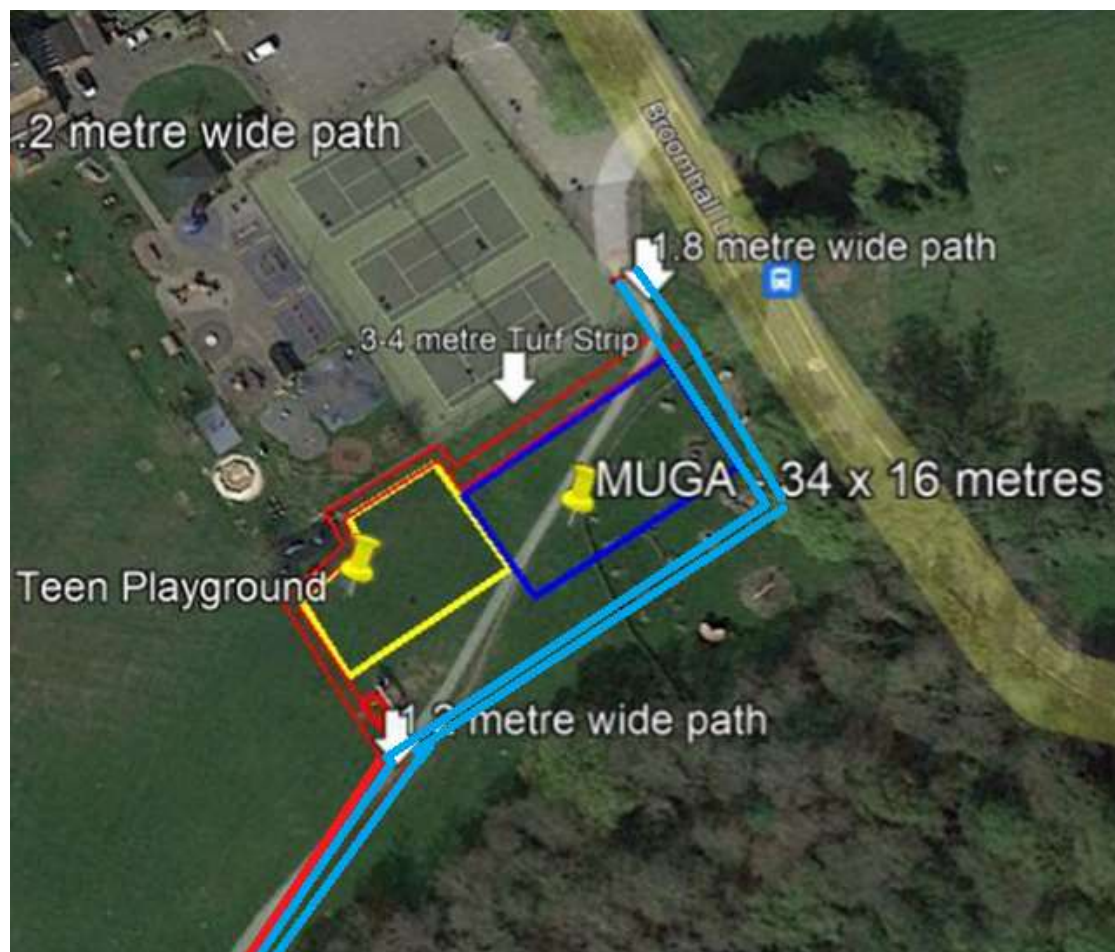
- Floodlit all weather surface for sports such as 5-a-side, Tennis practise, Paddle Tennis, Basket Ball & Netball
- Available to hire by the hour and for community use

New Play Area aimed at 10 – 14 year olds

- Relocated to allow better parent supervision at the park
- New youth fitness equipment

New Pathways across the park

- Linking up with Footpath 13 via the bridge and through the woods



INVITATIONS TO TENDER JUNE 2022

JOHN FLETCHER

Headmaster
Charters School

John thanked the council for the funding provided in conjunction with the neighbouring parish which enabled the school to construct the outdoor canopy. This allows the school to create a positive environment and allow students to be outside to work and socialise as much as possible.

The meeting received an update on the work that had taken place within the school during lockdown, with murals in school corridors focusing on Science English and Maths. Also, the introduction of “Charters 7” which is embedded throughout the school to provide continuity across different subjects.

John explained the use of the old RBWM Youth Centre which is now a space for Emotional Literacy Support which has increased from 1 day per week of external support to 5 days per week of support. The impact of the pandemic has seen an increased emphasis on Emotional Resilience learning throughout the school and is an area of focus.

And finally, that the school would be using the trees donated under the Queen’s Green Canopy would be used to plant around the new canopy.



CHARTERS

— SCHOOL —

UNITY RESPECT EXCELLENCE

Thank you for your kind and generous donation









CHARTERS
— SCHOOL —

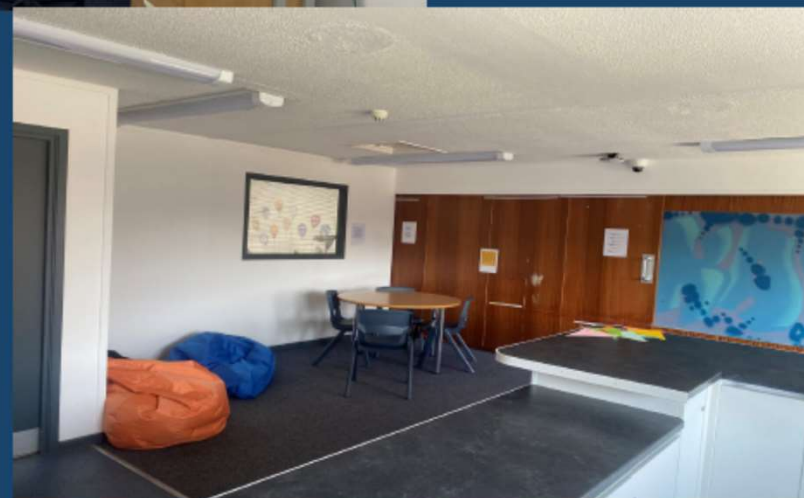


UNITY RESPECT EXCELLENCE

Emotional Literacy Support Assistants



CHARTERS
— SCHOOL —



UNITY RESPECT EXCELLENCE



CHARTERS
— SCHOOL —

Post pandemic recovery:

Emotional resilience
Confidence
Engagement

How

Opportunity and support

UNITY RESPECT EXCELLENCE



ANGELA HUISMAN

RBWM Library

Angela updated the meeting on the changes that have taken place in the delivery of service through the libraries and that now libraries include the customer service point of contact. The person you speak to one day about an issue can therefore be the person who finds you a book the next day.

As a part of this transformation of service, partnerships between RBWM and the Parish Councils have retained library provision at local levels and for Sunningdale the soft launch of the new library provision will take place on the 10 June at 4pm.

To run the library service, RBWM has effectively used volunteers who work alongside the librarians and provide services such as activities, events and support services. The opportunity for employment for age 16 and above was explained and the need for independent, trained, and skilled library employees who are now trained on Universal Credit applications and to liaise with other support organisations such as the Citizens Advice service.

Angela detailed the free to use online resources from RBWM Library service. (Full details of which are on the PowerPoint available on the council website).

RBWM Library Services

The Vision

We will provide physical and virtual spaces that build connections and facilitate access to knowledge, resources and support so that residents are equipped to aspire and thrive



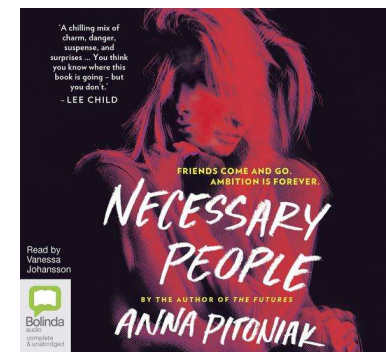
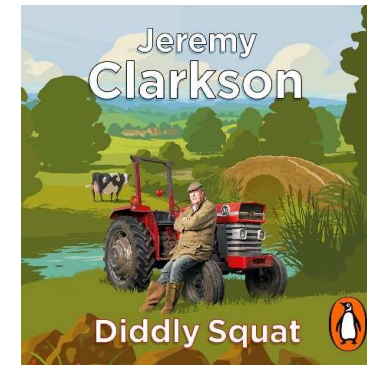
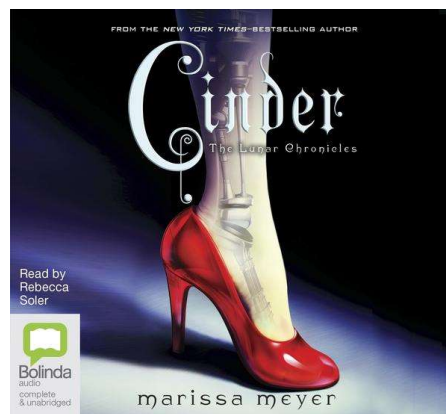
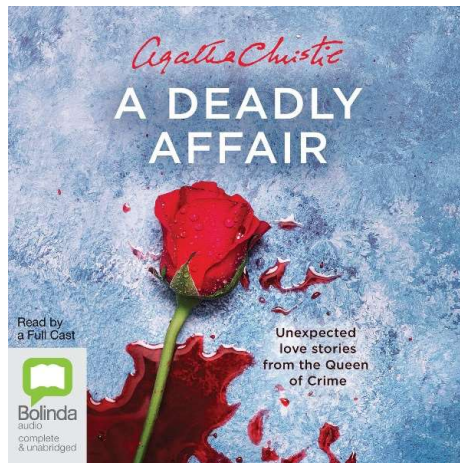
Library Offer

1. Books including access to the full range of Royal Borough and SELMS stock (free requests and reservations)
2. Activities, Events and Support Services (dependent on volunteer support – what the community cares enough about to do something about)
3. Volunteering Opportunities from age 14 <https://www.rbwm.gov.uk/home/jobs-and-careers/volunteering/volunteering-library>
4. Jobs from age 16 contact Avril.Heaney@RBWM.gov.uk
5. Signposting to support and services
6. Skills Support
7. Council Services Support and online payment
8. Safe Space – staff trained in safeguarding, DA support, disability support. Children from the age of 8 can use the space unaccompanied.



Online and Digital Library Offer

1. [Search Results | Royal Borough of Windsor & Maidenhead – BorrowBox](#)
2. <https://rbwm.kanopy.com/>
3. <https://rbwm.overdrive.com/>
4. <https://rbwm.naxosmusiclibrary.com/catcategory>
5. <https://www.pressreader.com/catalog/gaming>



Next Steps

1. Finalise SLA
2. Recruitment underway
3. Volunteer recruitment to follow
4. Happy to take feedback from residents and library users



Citizens
Advice East
Berkshire



Confidential
Outreach
Service

Jeremy
Sandell

Jeremy introduced Citizens Advice East Berkshire which was set up in April 2021 when Bracknell & District and Maidenhead & Windsor Citizens Advice merged. He said that despite lots of people still referring to the organisation as Citizens Advice Bureau, the Bureau had been dropped around the time that Google entered the public conscience, probably because no one could spell it. Over the last 12 months Citizens Advice has assisted over 9,600 individuals with the Big 4 – Benefits, Debt, Employment and Housing with almost £4m in financial outcomes for local people from this service.

For Sunningdale the last 12 months has seen support provided to 33 people with a financial outcome of over £33k and the Big 4 being: Benefits, Housing, Debt and Families and Relationships.

Jeremy explained the difficulty of providing the service purely over the telephone or online when some applications for benefit are over 40 pages in length and phone or email support is not the preference of the individuals accessing the support services. Therefore, he is delighted to work in partnership with Sunningdale Parish Council to bring the Outreach Service to the Parish Office every Friday from 9am to 3pm, to provide support to the community on a face-to-face and local basis.

Valerie Pike

Chairman

Windsor and Ascot
Neighbourhood Watch

Valerie explained that the Windsor & Ascot NHW was part of the national neighbourhood watch movement whose vision was to create a safer, stronger, and supportive community. It's Mission was to support and enable residents to be connected and in so doing make communities stronger, more active, and overall safer. Through the role they fulfil, Valerie commented that they see the loneliness of some residents which unfortunately makes them vulnerable to scams, especially on the doorstep and over the telephone.

The actions taken by the Neighbourhood Watch group are aimed at encouraging residents to know and support their neighbours. Working with Thames Valley Police, the RBWM Community Wardens and Trading Standards, the NW group use the items purchased by TVP from Proceeds of Crime Act funds to provide home security devices free of charge to vulnerable residents along with scam prevention tools such as Call Blockers for telephones and Video Doorbells for doorstep crime..

By holding community engagement evenings, NHW aims to create awareness of crime and crime prevention by encouraging residents to protect themselves and their assets: Locking cars; marking personal property and installing vehicle tracking systems for e.g.

Valerie listed the 4 questions that the group ask:

How can we help to make the community safer?

How can we help to raise the spirit of the community, especially the elderly and vulnerable?

How can we help the Police to reduce crime?

How can we make our own home security better?

REVD. JON HUTCHINSON

Holy Trinity Church,
Sunningdale

Revd. Jon explained to the meeting the legalities around the maintenance of a closed graveyard and the unfortunate circumstance of the lack of maintenance provided by the borough council. This led to a conversation between the Church and the parish council and the ultimate transfer of the maintenance of the closed graveyard in April 2021 to the parish council.

After a significant amount of work in the early period, and ongoing weekly maintenance the graveyard now looks as it should. It is commented upon by residents who walk through with their families, visitors to the Church, Church members and neighbours. The work that is being done by the parish council facilitated a community day last autumn when many other areas external to the church were tidied.

Revd. Jon highlighted the only remaining issue of the trees in the graveyard which are still under review between the borough and the parish, and he hopes this will be sorted out soon as there are some damaged trees in need of works.

Finally, Revd. Jon thanked the parish council for the work that has been done and hoped that the project of the garden of remembrance can be next on the list.

Any
Questions?

If you have any questions ...

Send them via email to the
council –

info@sunningdaleparish.org.uk

Sunningdale Parish Council and Committee Meetings Calendar 2022 2023

May	June	July	August	September	October	November	December	January	February	March	April
2022						2023					
17 th @ 7:30pm Annual Council FACE to FACE	21 st @ 7:30pm Parish Council FACE to FACE	26 th @ 7:30pm Parish Council FACE to FACE		20 th @ 7:30pm Parish Council FACE to FACE		22 nd @ 7:30pm Parish Council FACE to FACE	13 th @ 7:30pm Parish Council FACE to FACE	17 th @ 7:30pm Parish Council FACE to FACE		21 st @ 7:30pm Parish Council FACE to FACE	25 th @ 7:30pm Parish Council FACE to FACE
10 th @ 7:30pm Planning Committee	7 th @ 7:30pm Planning Committee	5 th @ 7:30pm Planning Committee	2 nd @ 7:30pm Planning Committee	6 th @ 7:30pm Planning Committee	4 th @ 7:30pm Planning Committee	1 st @ 7:30pm Planning Committee	6 th @ 7:30pm Planning Committee	10 th @ 7:30pm Planning Committee	7 th @ 7:30pm Planning Committee	7 th @ 7:30pm Planning Committee	11 th @ 7:30pm Planning Committee
	7 th @ 10:30am Oversight & Strategy Committee		2 nd @ 10:30am Oversight & Strategy Committee		4 th @ 10:30am Oversight & Strategy Committee		6 th @ 10:30am Oversight & Strategy Committee		7 th @ 10:30am Oversight & Strategy Committee		11 th @ 10:30am Oversight & Strategy Committee
10 th @ 1:30pm Finance Committee YEAR END		12 th @ 1:30pm Finance Committee		13 th @ 1:30pm Finance Committee	11 th @ 1:30pm Finance Committee BUDGET EXTRA	8 th @ 1:30pm Finance Committee	6 th @ 1:30pm Finance Committee BUDGET EXTRA	10 th @ 1:30pm Finance Committee		7 th @ 1:30pm Finance Committee	11 th @ 1:30pm Finance Committee



**THANK YOU FOR
WATCHING.**

**THE DATE FOR THE ANNUAL PARISH
MEETING FOR 2023 WILL BE SET IN THE
COMING MONTHS.**